

## Contact Information

## NUCLEAR MEDICINE DEPARTMENT

**Tel: 01 4162753**



## DIRECTIONS

Come in main entrance and  
follow direction for x-ray

Route 1

At main x-ray reception follow  
yellow and black line from main  
Radiology reception area for  
Nuclear Medicine



**ST JAMES HOSPITAL**

James's Street, Dublin 8  
Ireland



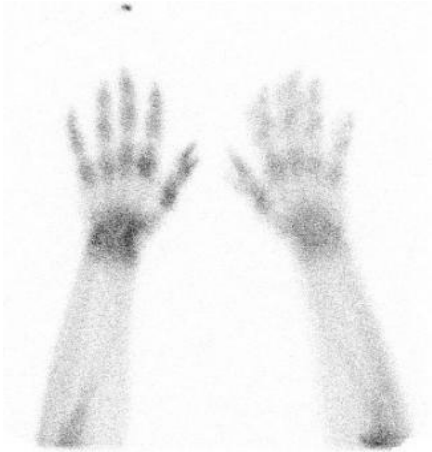
**NUCLEAR MEDICINE**

**DEPARTMENT**

**Tel: 01 4162753**

## WHAT IS A NUCLEAR MEDICINE SCAN?

A Nuclear Medicine scan involves receiving an injection into the arm or hand. Different injections are used depending on which area of the body is being investigated. Once injected, the scan will start after a certain time. There are different parts of the body that can be scanned but this depends on what the doctor is investigating.

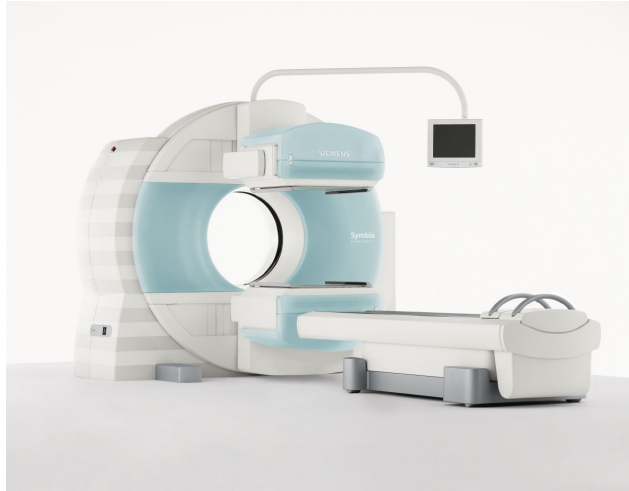


## WHY ARE THESE SCANS DONE?

Nuclear Medicine scans are done because they are excellent for finding problems in parts of the body at an early stage. The scans show the structure of an area in the body and also show if the area is working correctly. There are many reasons for doing these scans and they should be discussed with the doctor.

## WHAT DOES THE SCAN INVOLVE?

Once injected, the patient will often have to go off and wait for a period of time before the scan can be done. (several hours in some cases). This gives the injection time to settle in the body.



When brought to the scanner, the patient lies on their back and must stay still for all of the scan. Scans are normally anywhere between 25min-60mins, depending on the area of the body being investigated.

## PRECAUTIONS

Pregnant women and young children **should not** come with the patient to the Nuclear Medicine department.

The injection can stay in the body anywhere from 24 hours to 72 hours. There is a very small amount of radiation in the injection so precautions must be followed for the time the injection remains in the body. These precautions include:

- Avoiding close contact with pregnant women and young babies for long periods of time.
- Drinking plenty of fluids and emptying the bladder often (flush twice and wash hands thoroughly).
- If the patient is breastfeeding, express and discard milk (staff will inform for how long).



If the patient is pregnant or there is a possibility of pregnancy, staff **MUST** be told before the appointment.