



Thomas Street Car park

This secure, bright, purpose built, multi-story car park with onsite security provides 160 car spaces free of charge to St James's Hospital staff.

The car park is located 12 minutes (1km) away on foot, is serviced by the hospital shuttle, is serviced by Dublin Bus route 123 (every 10 minutes during peak hours), and has a Dublin Bike station located outside.



Timetable for free shuttle service to and from Thomas Street Car Park.

Thomas Street Car Park Timetable – Staff Shuttle From April 12, 2021	
Route 2 - Morning	
Pick up Point	Thomas Street Car Park (Car Park Entrance)
Drop offs	Hospital 1&2 Entrance and Discharge Lounge Set Down
Depart Thomas Street Car Park	07:05
Depart Thomas Street Car Park	07:20
Depart Thomas Street Car Park	07:40
Depart Thomas Street Car Park	08:00
Depart Thomas Street Car Park	08:20
Depart Thomas Street Car Park	08:40
Depart Thomas Street Car Park	09:00
Depart Thomas Street Car Park	09:20
Depart Thomas Street Car Park	09:40
Route 2 - Evening	
Pick up Points	Discharge Lounge Set Down and Opposite Hospital 1&2 Entrance
Drop off	Thomas Street Car Park (Car Park Entrance)
Depart Discharge Lounge	16:05
Depart Discharge Lounge	16:20
Depart Discharge Lounge	16:40
Depart Discharge Lounge	17:05
Depart Discharge Lounge	17:25
Depart Discharge Lounge	17:45
Depart Discharge Lounge	18:05
Depart Discharge Lounge	18:20
Shuttle will operate every 20 Minutes thereafter Driver discretion will apply depending on occupancy	
Last Departure time	21:40

Notes:

1. This bus time table is subject to review & change depending on usage.
2. Thomas Street Security are on site between the hours of 07:00 – 19:00 Monday - Saturday



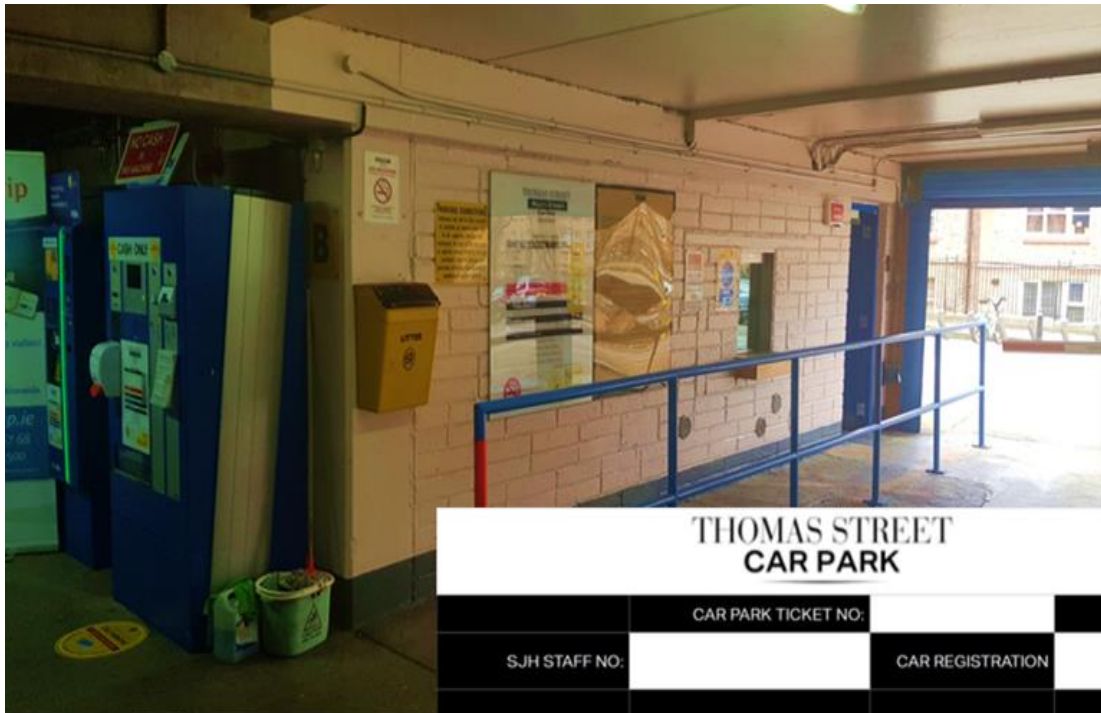
Staff Parking Information

Using the Thomas Street car park for the first time

Step 1: In your vehicle, enter Thomas Street car park by taking a car parking ticket.



Step 2: Go to the Security Office (located at the Oliver Bond Street vehicular entrance) where a member of the security team will ask you to complete a short application form and tap your staff ID



THOMAS STREET CAR PARK			
	CAR PARK TICKET NO:		
SJH STAFF NO:		CAR REGISTRATION	
AFTER HOURS ACCESS - Please circle as appropriate		YES	NO
SIGNATURE:		DATE:	
by Signing above you are agreeing to the Car Parks Terms and Conditions			



Staff Parking Information

Step 3: Go to work and by the time you return, your St James's Hospital ID badge will give you full access to Thomas Street Car Park, including its pedestrian and vehicular access, and roller shutters when closed.

Step 4: When exiting the car park, use your staff ID to exit (dispose of the ticket used to first enter the car park).

Registration Times

Registration is available Monday-Friday (excluding bank holidays) from 6:00am until 7pm.

For further information on how to access the car park by vehicle or on foot, please see below.

Vehicular Access - Steps for using the Thomas Street car park During opening hours, 6am – 7pm

Step 1: Drive to Thomas Street Car Park, Oliver Bond Street, vehicular entrance, enter by using your St James's Hospital ID Present your work ID to the circular card reader located on the 'IN' barrier.



Once you present your ID card, access will be given provided St James's Hospital spaces are available. If all spaces have been taken, 'SJH ALLOCATION FULL' will be displayed.



Step 2: Park in any of the available parking bays.

Step 3: Proceed to work using either the Thomas Street or the Oliver Bond Street pedestrian access / exit.

Note: *If you are an Easytrip user, the car park barriers may lift automatically, but you must always present your card to the card readers on entry and exit, this will cancel any Easytrip charges that may accrue.*

Vehicular Access - Steps for using the Thomas Street car park During Closed hours, 7pm – 6am

Step 1: Drive to Thomas Street Car Park, Oliver Bond Street, vehicular entrance.

During these times the car park security shutters will be closed.

Present your hospital ID to the card reader located at the right-hand side of the roller shutter.



When the shutter opens drive to the barrier and present your St James's Hospital ID card to the circular card reader located on the 'IN' barrier.

Staff Parking Information



Once you present your ID card, access will be given provided St James's Hospital spaces are available. If all spaces have been taken, 'SJH ALLOCATION FULL' will be displayed.

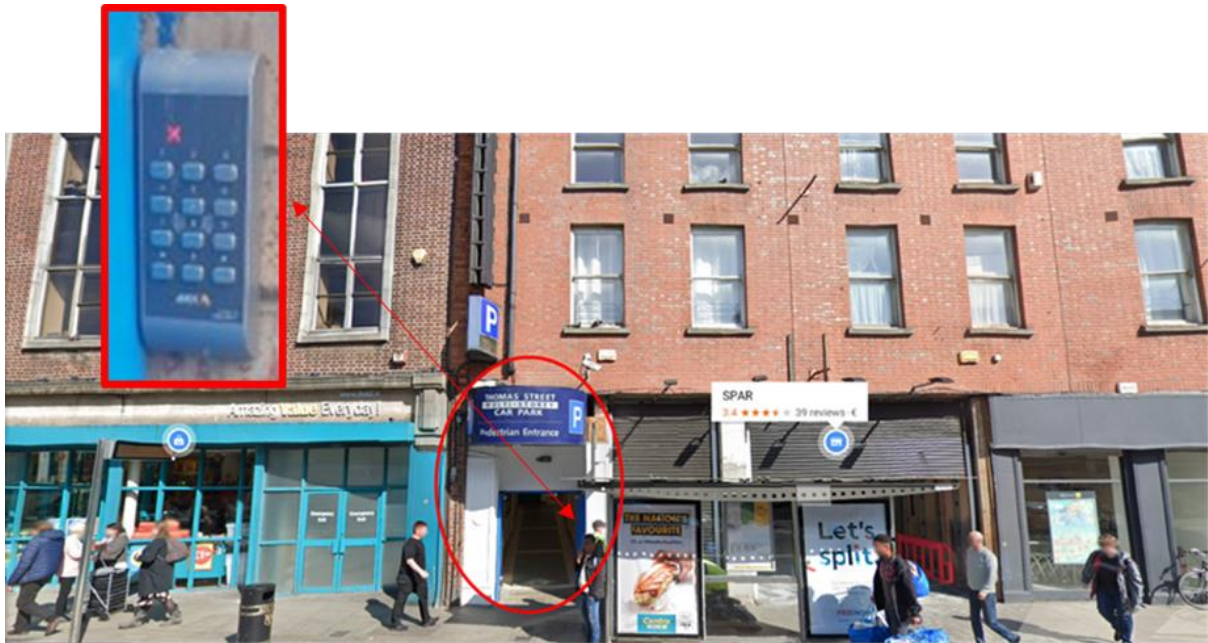


Step 2: Park in anyone of the available parking bays.

Step 3: Proceed to work using either the Thomas Street or the Oliver Bond Street pedestrian access / exit.

Note: *If you are an Easytrip user, the car park barriers may lift automatically, but you must always present your card to the card readers on entry and exit, this will cancel any Easytrip charges that may accrue.*

Pedestrian Access - Thomas Street pedestrian entry / exit



Pedestrian Access - Oliver Bond Street vehicular entrance / exit.



Both these entrances are accessible freely during the hours 7am-7pm, Monday to Friday.

Outside these hours the recommended pedestrian access point is Thomas Street. Access is via the card reader located to the right of the door. Present your staff ID to gain entry.